

iPad use – some info for parents

Evening routine

- ⦿ Ensure charged each evening - damaged cables need replacing quickly
- ⦿ Avoid charging over-night, for too long if possible - un-plug before going to bed
- ⦿ Leave downstairs

Problems

- ⦿ Quit the app and open again
 - Double-click *Home* button, and Swipe up to quit an app
- ⦿ TOA-TOA = **Turn Off And Turn On Again**
 - hold down *Sleep* and *Home* buttons simultaneously for 10 seconds to get the re-start
- ⦿ Delete problem app or eBook, and then re-install
- ⦿ Ensure any username, email address or password correctly input

Network access

- ⦿ At Home:
 - ? content filter – by ISP or your own set-up
 - ? multiple networks – for different users
 - ? timed access

Restrictions

- ⦿ the facility to restrict some of the iPad functionality:
 - installing or deleting apps
 - in-app purchases
 - Facetime
 - Password settings
 - Game Centre



- *Settings > General > Restrictions*
 - create a PIN code (that your son doesn't know), and you MUST remember it
 - make amendments as you wish

Maintenance by your son

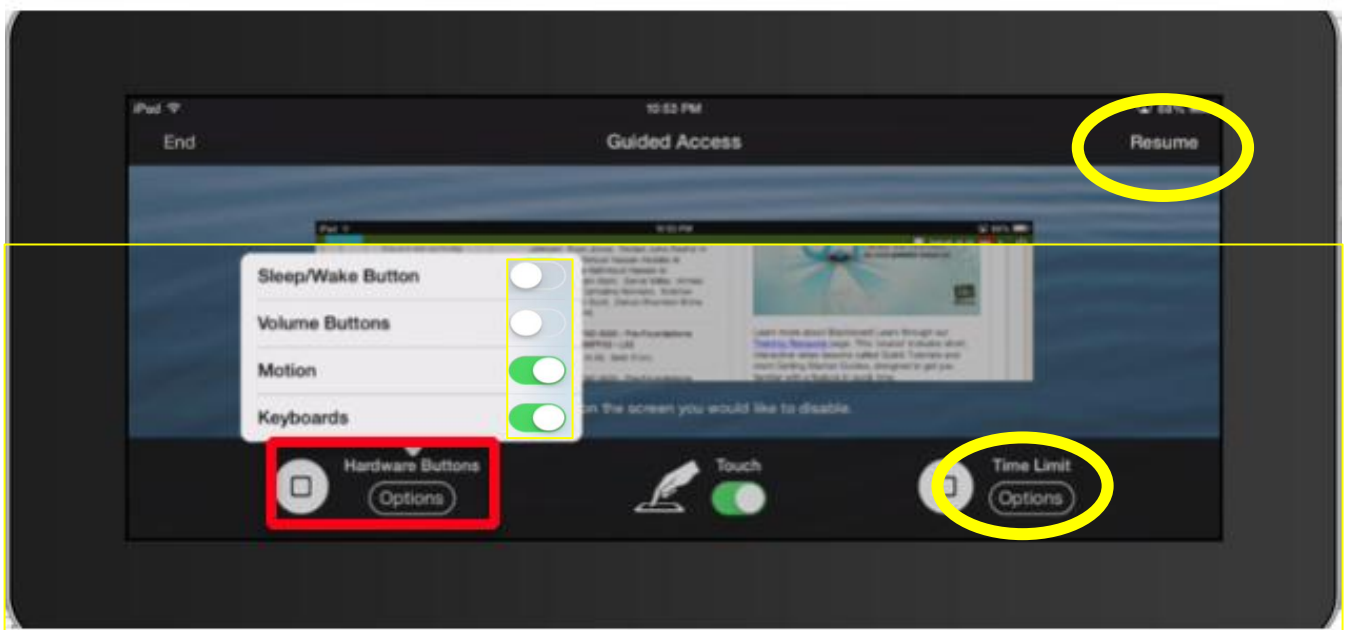
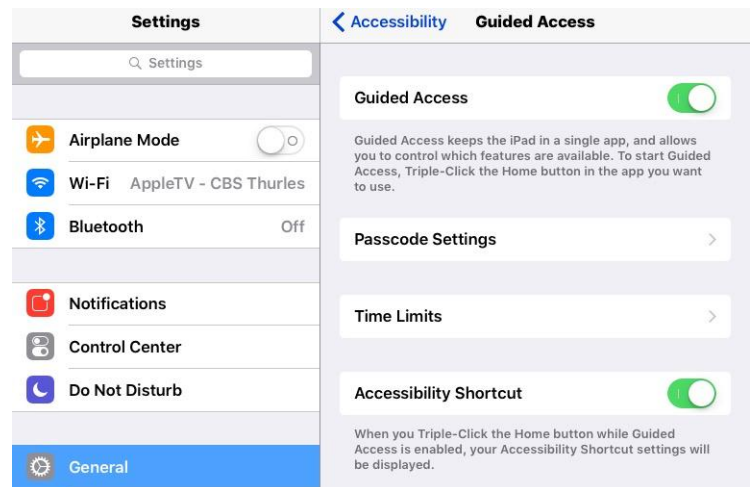
He needs to check his iPad on a weekly basis

- ⦿ Back Up !!!!
 - *Settings > iCloud > Backup* – must be on.
 - When was the last backup done?
- ⦿ Keep iOS and apps updated
- ⦿ TOATOA
- ⦿ Delete photos no longer needed
- ⦿ Delete, or Upload to Google Drive, files not being worked on any more
- ⦿ Delete old emails



Guided Access

- ⦿ the facility to lock the iPad in to one app
- ⦿ access by clicking the Home button 3 times
 - make sure you remember the PIN code that you create and that your son does not know the code
- *Settings > General > Accessibility > Guided Access*
 - set to **On**
 - set a *Passcode PIN*
- When in the desired app, click **Home** button 3 times quickly, and select **Start**
 - also, add a time limit if appropriate



Monitoring

- ⦿ By the School - may be inspected by any member of staff without warning
- ⦿ By Wriggle, on our behalf - profiles installed: Meraki Management & Wriggle
- ⦿ By You?